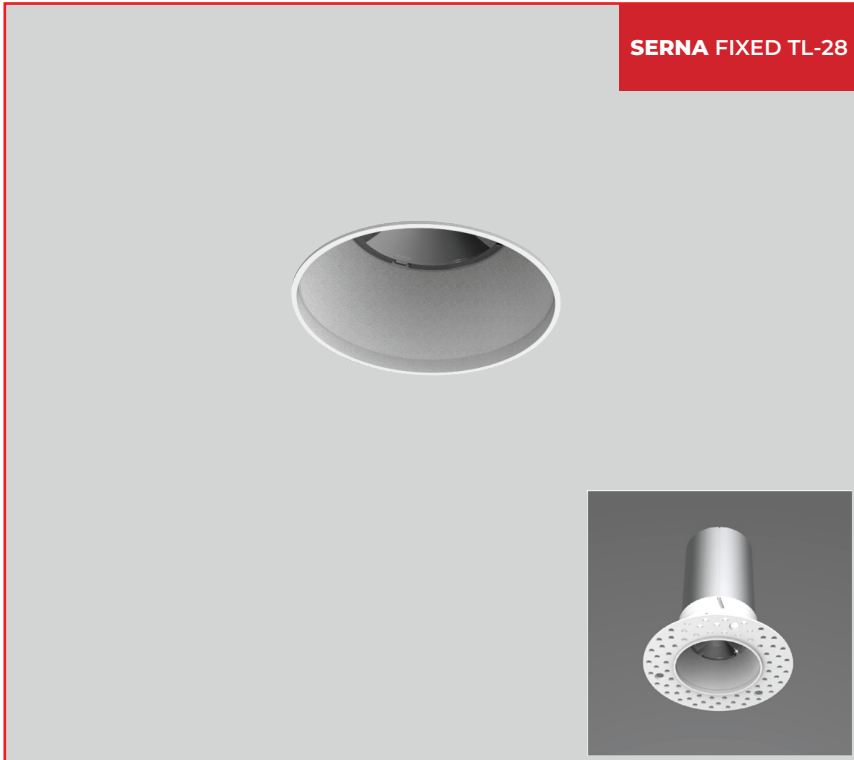


SERNA FIXED TL-28

Direct | Recessed



SERNA FIXED TL-28 is a premium recessed COB spotlight available in direct light distribution. Made from die-cast aluminium housing with a premium powder-coated finish, it offers durability and a clean architectural appearance.

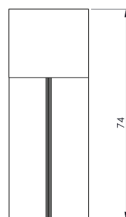
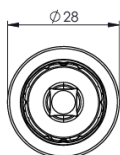
Powered by a high-quality COB LED with a binning tolerance of ≤ 3 SDCM and CRI ≥ 90 , the luminaire delivers excellent colour consistency and maintains at least 70% of its luminous flux after 50,000 operating hours. High-efficiency optics with lens and reflector ensure precise and uniform illumination.

Available in 5W with beam angle options of 15°, 24°, and 36°, SERNA FIXED TL-28 is ideal for residential, retail, hospitality, and commercial applications. The adjustable design offers enhanced flexibility for accent and focused lighting requirements, while optional customization features further improve installation versatility and functionality.

Single Line Diagram

SERNA FIXED-28

Recessed



SERNA FIXED TL-28



Quick Info

Mounting Type

Recessed

Material Colour

Customize RAL available

Protection mode

IP40

Driver Details

ON/OFF/, DALI-2 DT6 / DALI-2 DT8/ DALI +

Power Factor (PF) -0.95

THD- <10%

UGR - <19

LED

CCT- 3000K/ 4000K/ 5700K/ TUNABLE WHITE 2700K-6500K

CRI- ≥ 90

Life Span - L70@50000h

MacAdam - ≤ 3 SDCM

Beam Angle

15°/ 24°/ 36°

Optics

Lens & Reflector

Efficacy

3000K- 80.3

4000K- 91.1

5700K- 109.9

Tunable White 2700K-6500K- 91.1

Electrical

Wattage - 5W

Input Voltage- 220-240V AC

Physical

Outer Dia- 28mm

Height-74mm